

TB320
2-TONNE



**COMPACT MINI
EXCAVATOR**

3 SERIES

TAKEUCHI[®]
From World First to World Leader



NEW 3-SERIES **TB320** 2-tonne tool carrier

The TB320 is from the New 3-SERIES of Takeuchi excavators, available as a cab or canopy option it weighs-in at 2.0-tonne for safe legal towing.

The new 3-Series TB320 is a combination of both mini excavator and tool-carrier with high-spec configuration.

It comes with proportional control on auxiliary 1 & 2, 3rd auxiliary pre-piped for low pressure quick hitch and a 4th aux as a factory fitted option.

With excellent 40l/min flow rate this new 2-tonne is adaptable for a variety of hydraulic attachments including: mulchers, flails, augers, post knockers and tilt-rotators, typically used by landscape contractors and groundworkers.

The TB320 combines all the proven characteristics of Takeuchi excavators: smooth hydraulics, power performance, proven durability, high resale value, with maximum operator comfort and serviceability.



ATTACHMENT READY WITH ADDED AUXILIARY PORTS

The New TAKEUCHI 3-SERIES TB320 is designed to utilise various attachments with 3 auxiliary ports as standard, 4th line optional.

The TB320 features the best-in-class engine and hydraulic performance, making it an extremely versatile tool carrier.

Simple lever from single to dual flow conveniently positioned at the front of the machine.



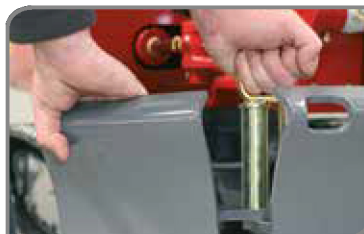
EXPANDABLE TRACK FRAME

The hydraulic expanding track frame adjusts from 980mm - 1370mm. The longer track frame gives greater operating stability.

2 speed tracking with auto step down.

EASY ADJUST DOZER

A simple pin device to match the TB320's extendable track width.



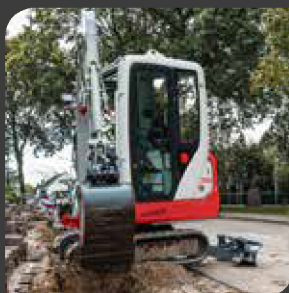
PILOT JOYSTICKS

Pilot joysticks for smooth easy operating and proportional control for 1st and 2nd auxiliary.



COMPATIBLE BREAKER

The TB320 is compatible with a Takeuchi TKB72-S sound suppressed hydraulic breaker. Designed to meet the requirement for quieter operating environments.



Comfortable Operator Station
- Cab & Canopy



STAGE V
COMPLIANT

Led Lights
LED workzone lighting on roof and boom arm.

Top Mounted Boom Cylinders

- Increased visibility when operating
- Damage reduction

Up-to 4 Auxiliary Ports

- 1st & 2nd with proportional control
- 3rd pre-piped for quick hitch (low pressure)
- 4th auxiliary optional



Excellent 40l/min flow rate

Excellent Footroom
Footrest and offset foot pedal

Retractable Under-Carriage
Expanding Track Frame
980mm - 1370mm

Heavy Duty Dozer Blade
With pin extensions to match track width





ENHANCED FEATURES

The TB320 comes factory fitted with steel hydraulic pipework. 1st and 2nd with proportional control and dual flow as standard, 3rd aux low pressure quick hitch piping is factory fitted with a safe hand and foot dual activation.

With excellent 40l/min flow rate this new 2-tonne is adaptable for a variety of power-hungry hydraulic attachments. Designed to deliver maximum hydraulic flow when working under load.

With maximum engine power and excellent breakout force (17.0kN/ 9.1kN), this 2-tonne mini delivers power performance when required.

The long arm, heavy counterweight and longer track frame add to stability when digging deep (2370mm).

LED workzone lighting (2 x roof and 1x boom) adds to operator visibility on site and the cab features an external roof beacon socket.

OPERATOR COMFORT

Pilot controls combined with cushioned boom and swing cylinders, help reduce shock and vibrations for a smoother machine operation.

The spacious operator station has a large adjustable seat, with plenty of foot room delivers comfortable all day operating.

The TB320 cab option has an easy gas lift-assist window that simply slides into the roof space.



STANDARD FEATURES

(see website for the complete features list)

OPERATOR STATION

- All steel Cab / Canopy (ROPS/ TOPS/ OPG) with integrated roof lift points
- Adjustable seat with retracting seatbelt
- Folding drinks holder
- In-cab radio with stereo speakers MW/FM/ USB/ Bluetooth
- Cab with gas lift-assist window slides into recess
- Cab with secure stowable lower glass storage
- Internal valve (cab) for hot/cold temperature selection
- In-cab multi-vent heater/de-mister
- Foot rests and offset foot pedal
- Travel levers with foot pegs

ELECTRICAL

- Sealed rocker switches
- Internal power sockets - 12V / USB
- Cab - roof beacon power socket - 12V
- Travel alarm
- LED workzone lights

ENGINE

- Stage V <19kW - low emission
- Dual fuel filtration with water trap
- Dual element air filter
- Engine safe start system
- Service interval - 250 hours



HYDRAULICS

- Cushioned boom and swing cylinders
- Aux ports: 1st, 2nd + 3rd (pre-piped for hydraulic hitch)
- Proportional auxiliary controls 1st & 2nd
- Aux with independent isolation valves

UNDERCARRIAGE AND FRAME

- Longer than average track frame
- Triple flanged track rollers & sealed bearings

OPTIONAL FEATURES

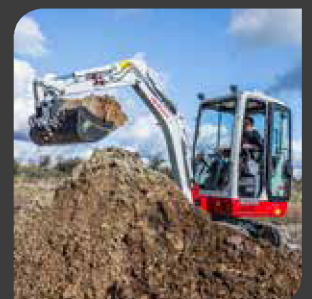
(Available Factory Fitted)

- Boom and arm holding valves with lift alarm
- TFM telematics
- 4th auxiliary with proportional control

TRAILER TOWABLE

With an operating weight of 2060kg cab and 1930kg canopy. The TB320 provides the most powerful yet portable mini digger.

The TB320 machine weight on a trailer provides capacity for additional bucket and materials up to the 3.5-tonne road-towing restrictions.



TB320 COMPACT MINI EXCAVATOR



MAXIMUM SERVICEABILITY

The styled steel engine hood and side cover provide unparalleled access to engine and hydraulic components simplifying all aspects of machine maintenance.

REAR-ACCESS

The lockable all-steel hood provides unrestricted engine service access.

The rear service door allows quick access to the dipstick, oil fill, engine oil filter and air cleaner.

These clustered service points make for quick and easy service routines to maintain machine performance.

CONVENIENT SERVICE ACCESS

Lockable fuel tank easily located on the rear offside with a lower service panel for grease gun storage. Near side has visible hydraulic tank sight gauge and the battery is securely located below the operator seat.



ROBUST FOR SITE

The TB320 is manufactured with all steel construction for maximum durability on site.

The exposed ground level hydraulic hoses are spiral steel wrapped offering maximum protection.

RELIABLE TRACK DESIGN

Triple flanged rollers support the track in multiple positions improving machine stability. The upper roller maintains track alignment and helps shed debris.

High torque auto step-down travel motors deliver on-demand tracking power when dozing, turning and climbing.

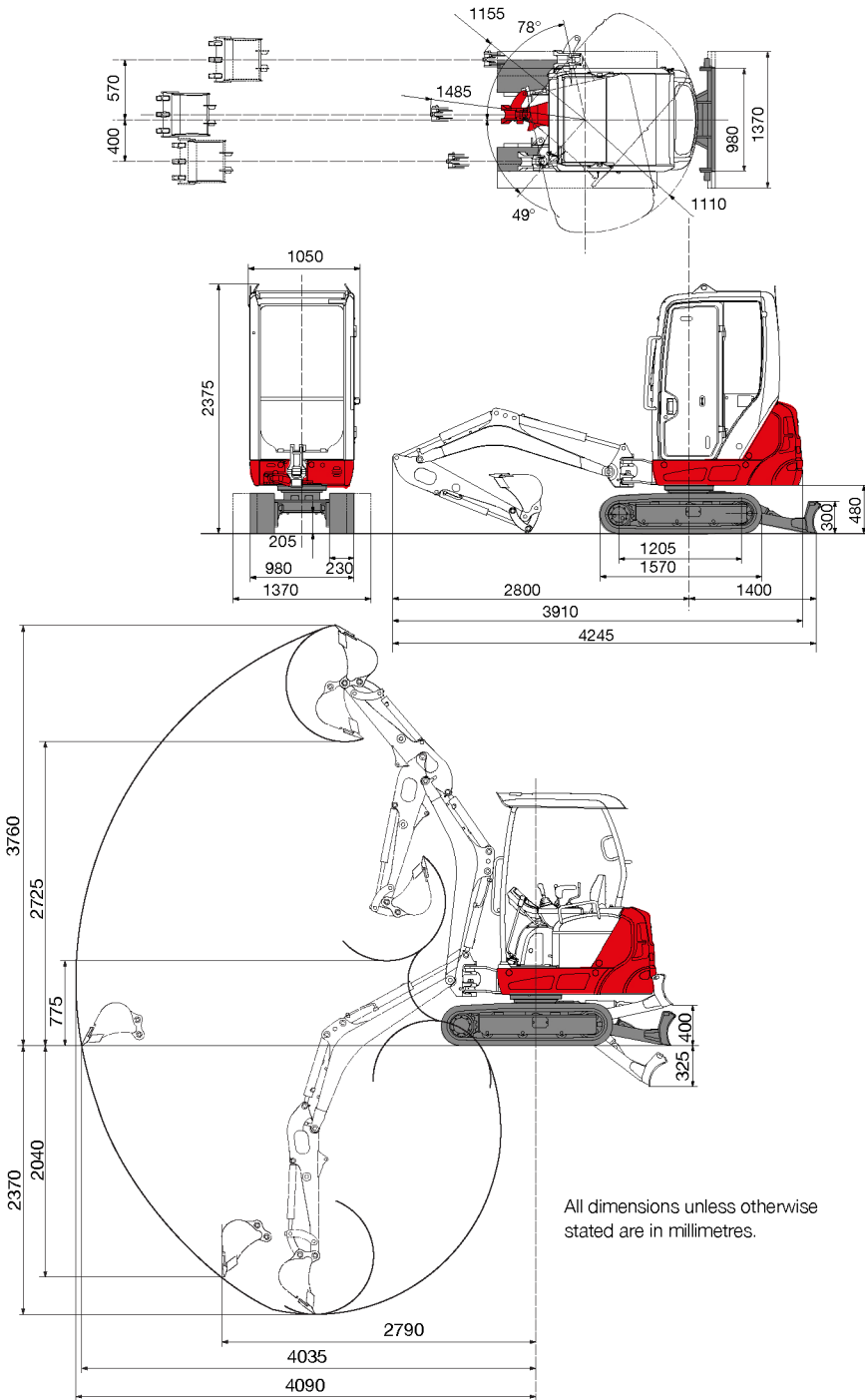


TSS - TAKEUCHI SECURITY SYSTEM

The TB320 comes with TSS immobiliser key as standard. Includes 1 red master key and 3 black user keys. Can programme up to 13 user keys.



TB320 COMPACT MINI EXCAVATOR



All dimensions unless otherwise stated are in millimetres.

TB320

Standard UK Specification - Long Arm / Rubber Tracks

Engine	
Make	Yanmar
Model	3TNV70
Rated Output (kW)/rpm	12 / 2500
Maximum Torque (Nm)	52.7
Cylinders	3
Displacement (cc)	854
Electrical System	12V 45A

Dimensions & Weight	
Machine weight (kg) Cab/Canopy	2060 / 1930
Overall Length (mm) for transport	3910
Width cab/canopy (mm)	1050 / 985
with extended track (mm)	1370
Height Cab/Canopy (mm)	2375 / 2300
Ground Clearance (mm)	205
Min. Front Swing Radius (mm)	1155
Tail Swing Radius (mm)	1110
Dozer Blade (W x H) (mm)	980 x 1370x 300

Operating Information	
Max Digging Depth (mm)	2370
Max Dump Height (mm)	2725
Max Reach at Ground Level (mm)	4035
Max Vertical Digging Depth (mm)	2040
Max Bucket Digging Force (kN)	17
Max Arm Digging Force (kN)	9.1

Hydraulic System	
Main System Pressure (bar)	210
Pump Type	Variable x 2 + Gear x 2
1st Auxiliary Maximum Flow (l/min) / Pressure (bar)	40 / 210
2nd Auxiliary (Optional 4th) Maximum Flow (l/min) / Pressure (bar)	11.3 / 180
3rd Pre-piped release pressure QH line Harford	180

Swing System	
Boom Swing Angle (L/R)	78 / 49
Slew Speed (rpm)	9.5
Slew Motor	Axial Piston
Slew Brake	Wet Friction Plate

Undercarriage	
Traction Motor	Axial Piston
Traction Drive	Planetary
Traction Brake	Disc
Track Width (mm)	230
Ground Contact Length (mm)	1205
Ground Pressure Cab / Canopy (kPa)	33 / 30.9
Travel Speed (km/h)	2.4 / 4.5
Maximum Gradeability	15°

Capacities	
Hydraulic System (l)	35
Fuel Tank (l)	22
Engine Lubrication (l)	2.8
Cooling System (l)	4.1

Health & Safety	
Noise / Sound Power Level (LwA)	93 dB
Vibration Hand Arm / Body m/sec ²	≤2.5 / ≤0.5

**2 YEAR
2,000 HOUR**

WARRANTY

Takeuchi machines come with a 2 year/2000 hour warranty as standard.

Before fitment of a hydraulic attachment, machine auxiliary pressure and flow should be accurately measured. For all lifting specifications please refer to the lift charts on the Takeuchi website or operator manual.

In accordance with our established policy of constant improvement, we reserve the right to amend these specifications at any time without notice. Photographs shown may feature non-standard equipment.

For more information locally contact:



SCAN ME

To find your local dealer

Takeuchi Mfg (UK) Ltd, Unit E2B Kingsway Business Park, John Boyd Dunlop Drive, Rochdale, Lancashire OL16 4NG
E: info@takeuchi-mfg.co.uk www.takeuchi-mfg.co.uk

@TakeuchiUK



TAKEUCHI
From World First to World Leader